

Safety and Environmental Protection

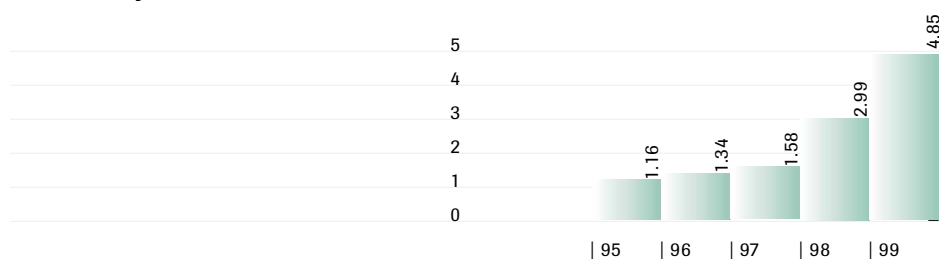
Roche has long been aware that only a financially successful company can be active in environmental and social areas and that financial success only results if it acts in an environmentally and socially responsible manner.

Hans Kuenzi, head of Corporate Safety and Environmental Protection

Safety and environmental protection expenditure in millions of CHF

	1999	1998
Investment	154	229
Operating costs	379	363
Total expenditure	533	592

Eco-Efficiency Rate (EER)



The EER or Eco-Efficiency Rate is an indicator of the ecological effect of spending on environmental protection as a proportion of sales and of the environmental damage caused by Roche's processes. The EER develops proportionately to sales and in inverse proportion to the amount spent on environmental protection. The higher the EER value, the greater the degree of eco-efficiency.

In 1999 expenditure on safety and environmental protection amounted to some 533 million Swiss francs, or 2% of consolidated sales. Major investments were made in integrated safety and environmental protection systems in new vitamin production facilities at our sites in Dalry (Scotland) and Grenzach (Germany).

No major accidents or incidents. We are pleased to report that in 1999 there were again no major incidents. Regular training and continuing education, risk analysis and safety and environmental protection audits throughout the Group helped keep the number of

occupational accidents at the previous year's low level. 39 S&E audits in 18 countries confirmed that the Roche Group maintains a high standard of safety and environmental protection. This was reflected in awards to individual Roche affiliates. Our facility at Heanor (United Kingdom), for example, received the British Safety Council's National Safety Award, while our plant in South Korea was awarded a certificate by the Korea Industrial Safety Corporation in recognition of 420 accident-free working days.

Effective environmental protection.

Thanks to Group-wide measures to promote energy savings, energy consumption remained practically steady despite a further substantial increase in production output. In addition, emissions of volatile organic compounds (VOCs) were again reduced Group-wide, though with fluctuations from site to site. By contrast, the total chemical waste volume was up slightly as a result of the significantly higher production output. Further advances were made in finding alternative substances or engineering solutions to replace substances that contribute to the destruction of the ozone layer.

Commitment to sound environmental policy.

In 1999 Roche continued to work actively to promote sustainable development as a member of various national and international bodies concerned with occupational health and safety, safe management of chemicals and environmental protection.