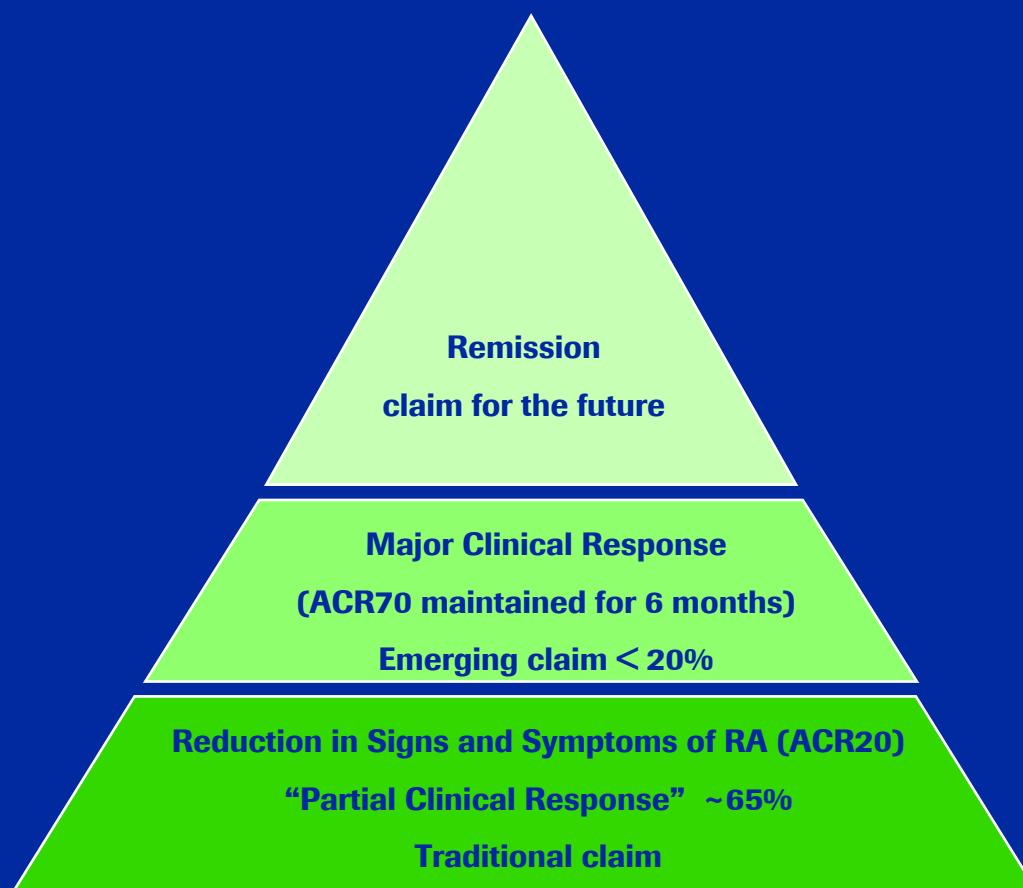

Therapies that promise to make a difference

Urs Schleuniger, PhD



Today, significant unmet medical need remains

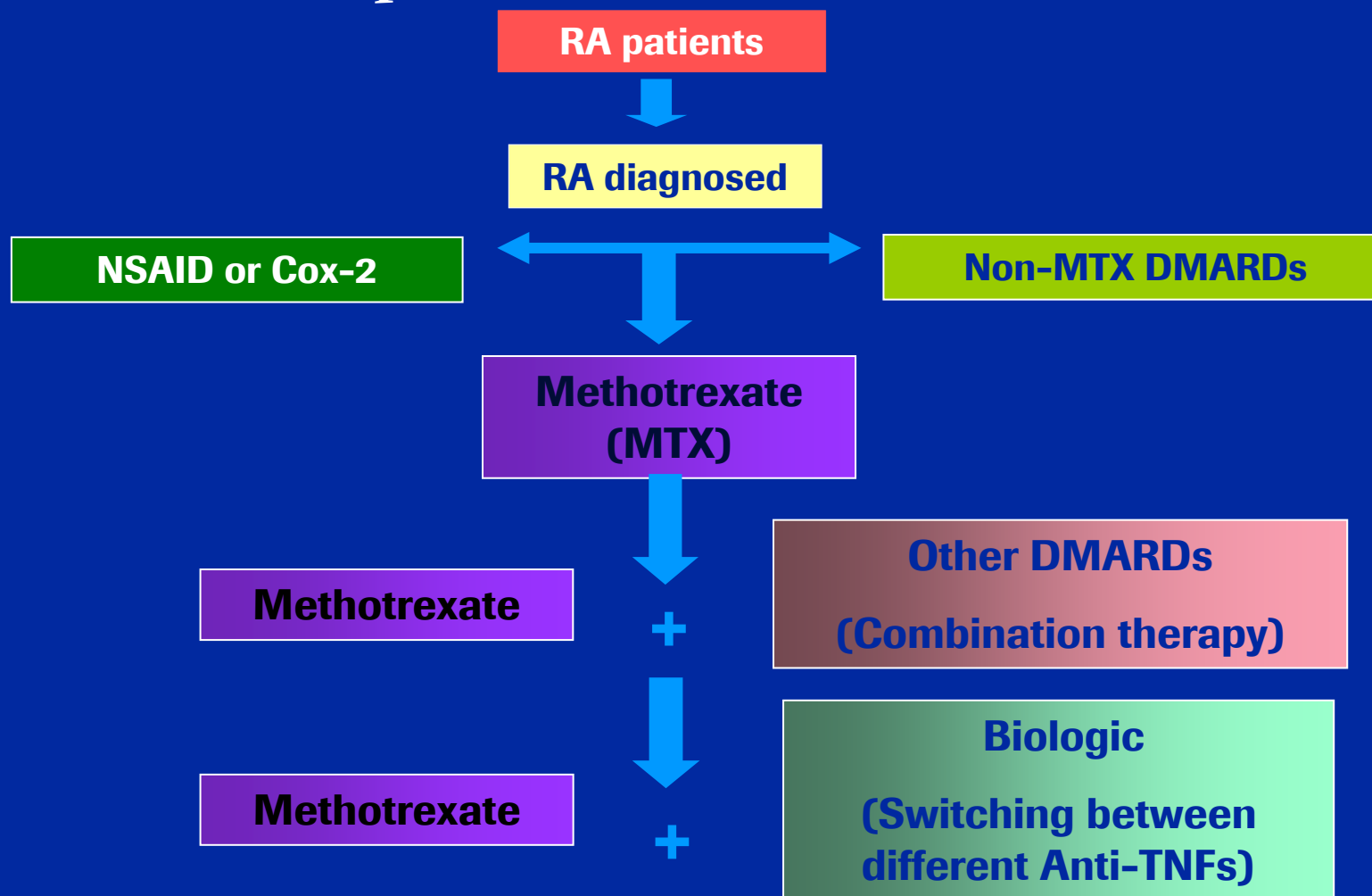
Need exists for novel treatments



Pyramid of response

Rheumatoid Arthritis

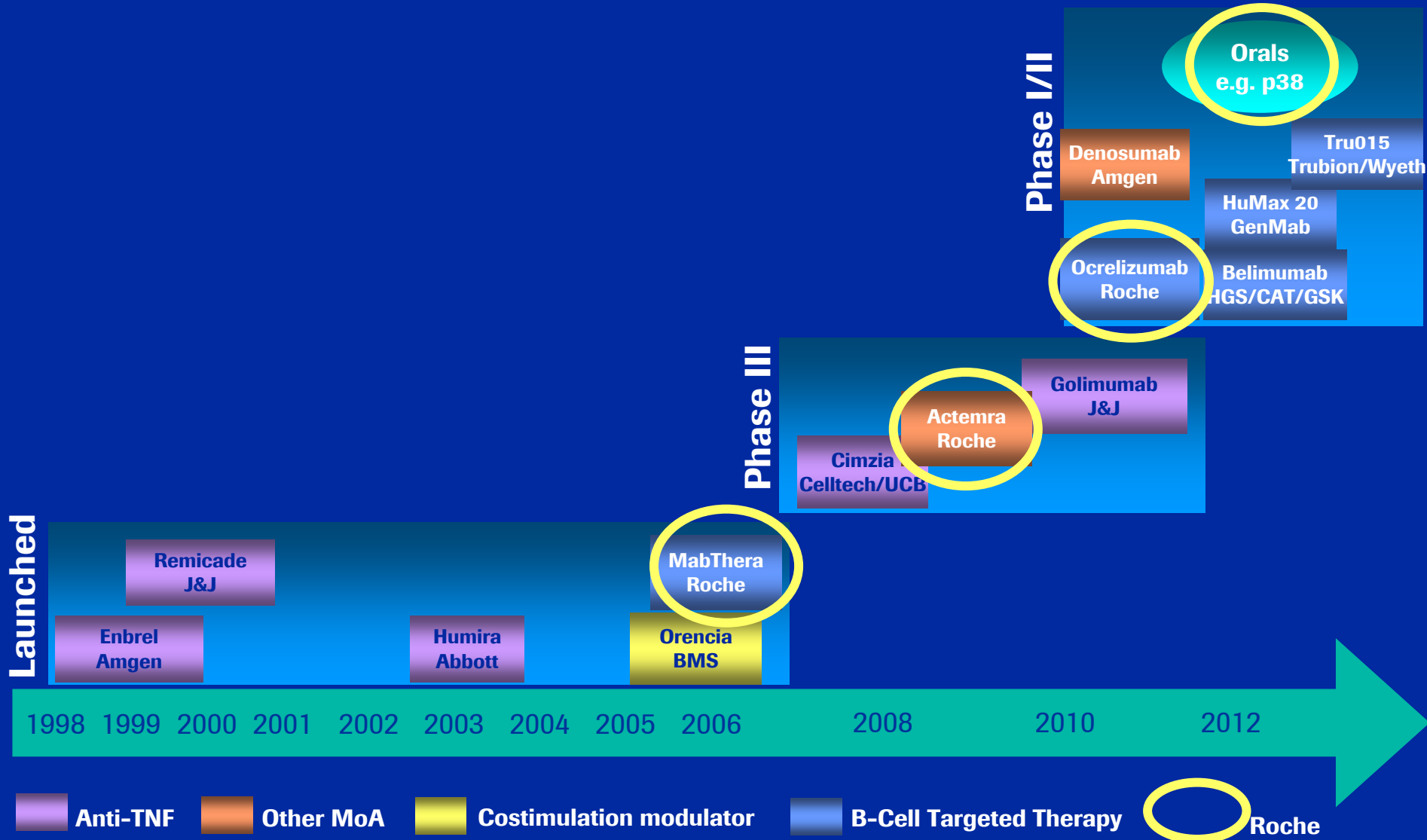
Current treatment options





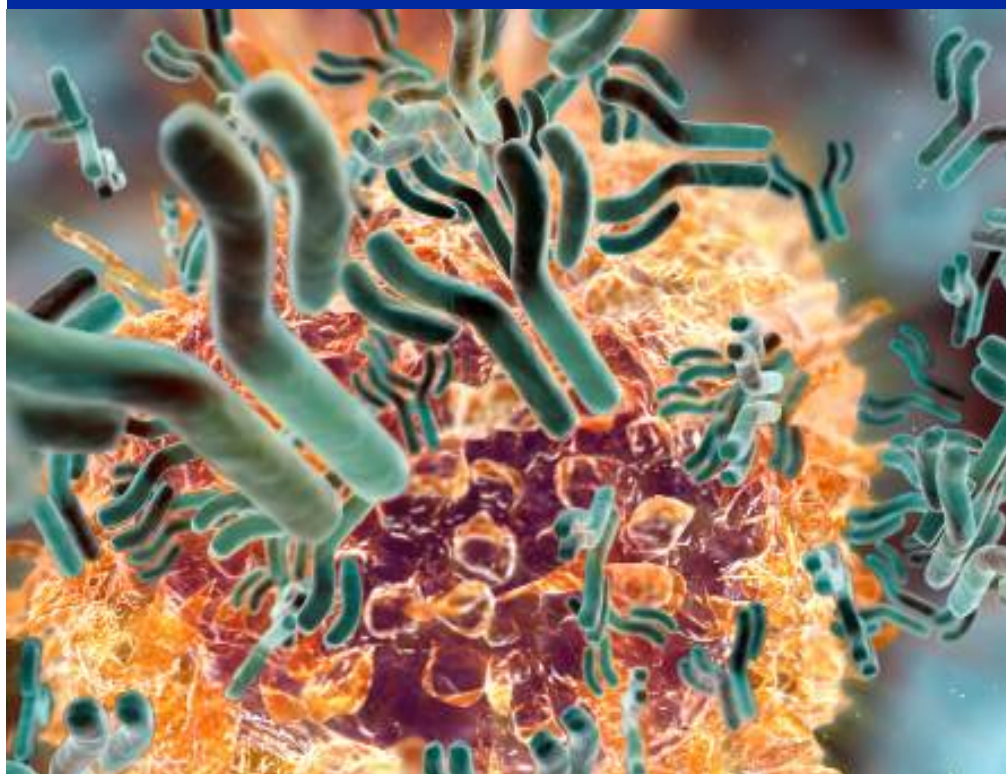
Major players are active in this area

Opportunities remain for novel therapies





Roche's first step
in providing novel rheumatoid arthritis treatments

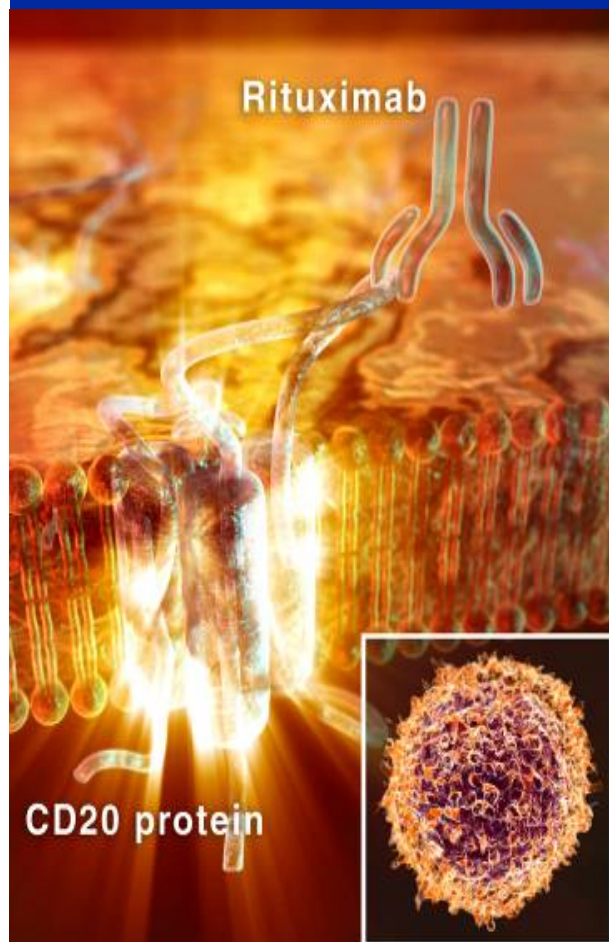


MABTHERA[®]
— RITUXIMAB —

B CELL THERAPY. LASTING SUCCESS.

MabThera/Rituxan

Innovative and effective



- The first and only B cell therapy in RA
- A monoclonal antibody that selectively targets a subset of B cells, leaving the immune system intact
- REFLEX, a Phase III trial in patients with long-standing, severe disease who had failed to respond, or were intolerant to, TNF inhibitor therapy confirmed MabThera's efficacy

REFLEX - Randomised Evaluation of Long-term Efficacy of RituXimab in RA



MabThera/Rituxan

Effective and lasting with proven safety

- Repeat courses of MabThera provided improved efficacy
 - Remission rates doubled (6% to 13%)
 - ACR70 doubled (12% to 21%) - signs and symptoms of disease improved by 70% in patients treated with MabThera
- Repeated courses of only 2 infusions every 6 to 12 months lead to improved mobility and reduced pain
- MabThera's safety profile is established with more than 960,000 patient exposures in oncology and autoimmune disease

MabThera/Rituxan

Inhibition of joint damage



- Unique data in patients with an inadequate response to one or more TNF inhibitors showed significant inhibition of joint structural damage at 12 months:
 - More than 50% reduction in joint space narrowing and bone erosions compared to MTX alone

X-ray changes that MabThera aims to inhibit



MabThera/Rituxan

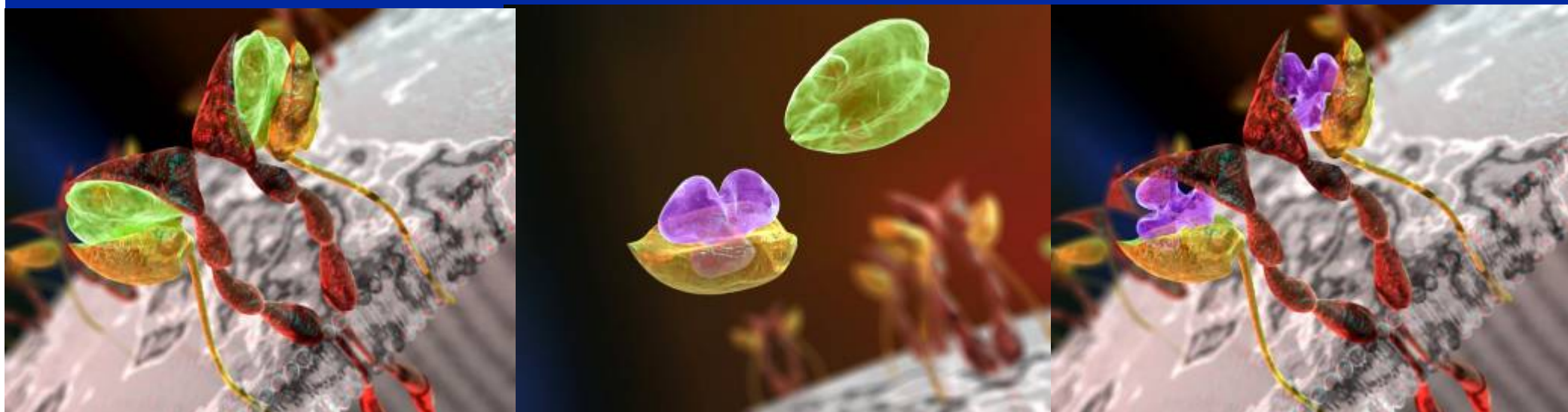
Summary

- **Innovative:** first and only selective B cell therapy
- **Effective:** provides lasting treatment success with repeated courses of only 2 infusions every 6 to 12 months
- **Safety:** selectively targets CD20-positive B cells, leaving the other important cells in the immune system intact
- **Cost-effective:** lower average annual treatment cost when compared to other available biologics



Another opportunity to make a difference

Actemra™



Actemra

First-in-class biologic agent



- Blocks interleukin-6 (IL-6), an important protein involved in the inflammation associated with RA
- This unique IL-6 inhibition is thought to impact both joints and the entire body
- Actemra is being developed in collaboration with Chugai in Japan
- Chugai have filed in Japan for RA in adults and systemic onset juvenile idiopathic arthritis (sJIA) in children
- Planned filing in US and EU is late 2007

Actemra

Showing impressive results

Rheumatoid arthritis

In two Japanese monotherapy trials results showed:

- Best ever reported symptom control
- Significantly less radiographic joint destruction after one year

A large Phase III programme in RA is currently being conducted with more than 4000 patients in 41 countries in different patient groups



Actemra

Showing impressive results

Systemic juvenile idiopathic arthritis (sJIA)

A Japanese study confirmed significant improvements amongst children not adequately responding to conventional therapies:

- More than two thirds of patients achieved 70% improvement of symptoms
- More than three quarters of patients had 50% reduction in signs and symptoms of disease

**How does Roche hope to make a difference
in the future?**

Ocrelizumab R1594



Ocrelizumab R1594

- Humanised antibody (anti-CD20) that also targets B cells
- Potential for improved administration
- Less immunogenicity potentially improving tolerability
- Development programme will move into Phase III in early 2007 for RA
- Ocrelizumab provides an opportunity to treat other debilitating autoimmune diseases e.g. lupus and multiple sclerosis

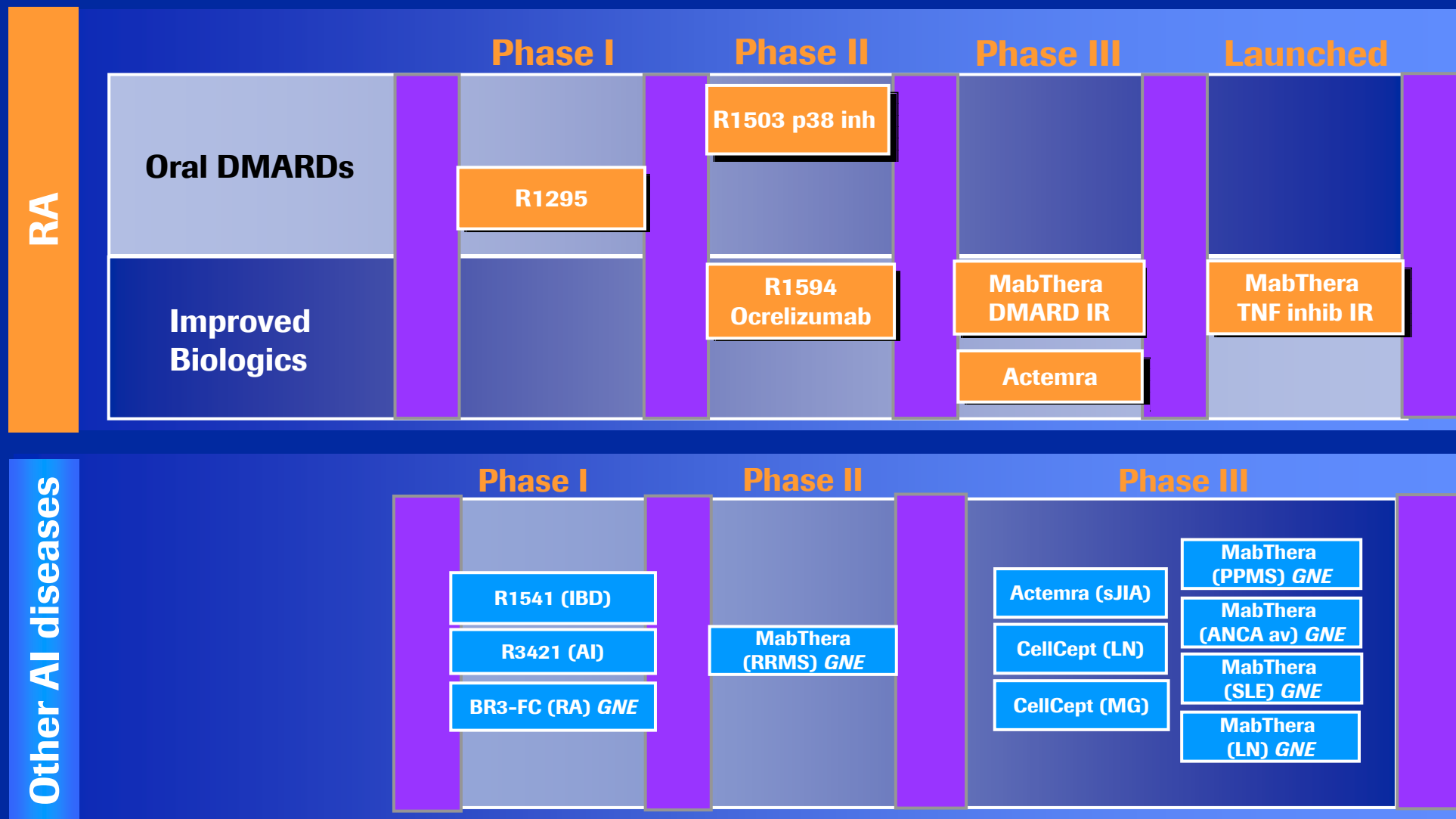
R1503

- R1503 offers selective inhibition of p38 α
- p38 regulates the production of the cytokines TNF, IL-1 and IL-6, which are inflammatory mediators that are overactive in RA
- Oral biologic
- Currently in Phase II



Roche in RA and Autoimmune Diseases

Depth of portfolio and breadth of indications





Summary

Roche in RA and autoimmune diseases

- Innovative pipeline with 2 first-in-class drugs in phase III/launch
- Large investment in development program (second only to oncology)
- Scientific and commercial collaboration with co-marketing partners
Genentech and Chugai
- Strong corporate commitment to build up RA/Autoimmune franchise

Roche poised to become a leader in RA



We Innovate Healthcare