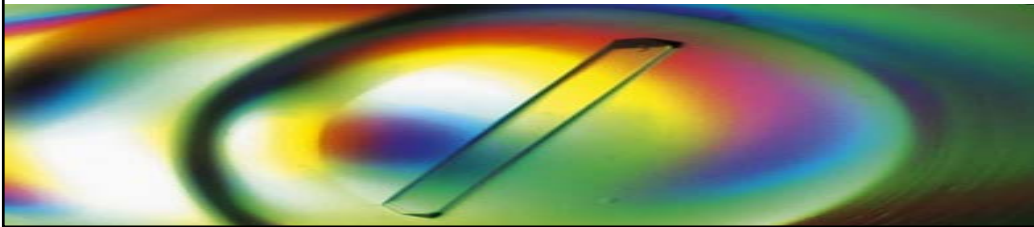




Roche early development pipeline in Oncology
Roche Oncology Event, June 19, 2006

*Eduard E. Holdener, Head of Global Pharma
Development*



Early-stage oncology portfolio

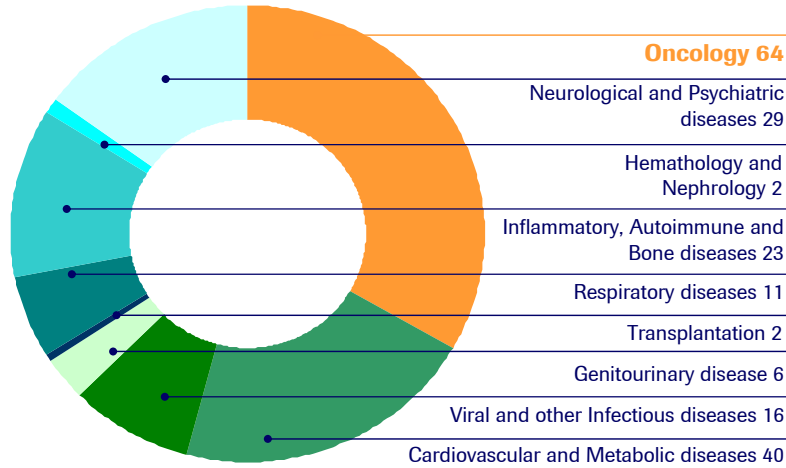
Selected phase I/ II compounds

Conclusions



Substantial R&D investments in Oncology

64 out of 192 Research and Development projects*



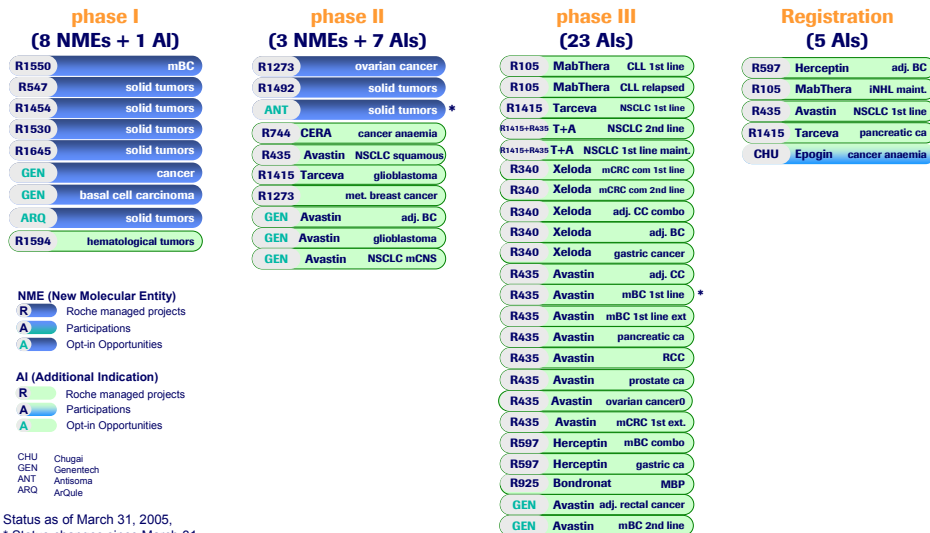
Status as of March 31, 2005; * Roche Rx only

3



Roche Group Oncology pipeline

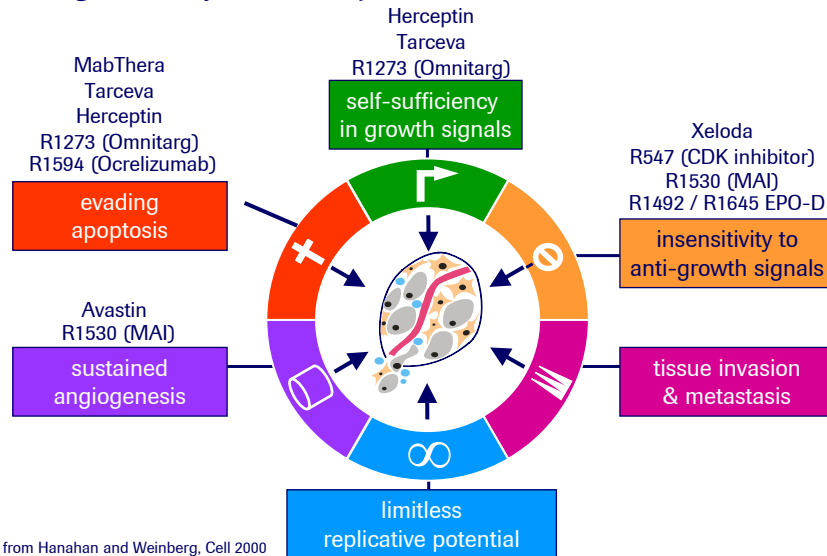
Total of 11 NME's + 36 Additional Indications



4

Carcinogenesis is a multi-step process

Attacking cancer from many sides



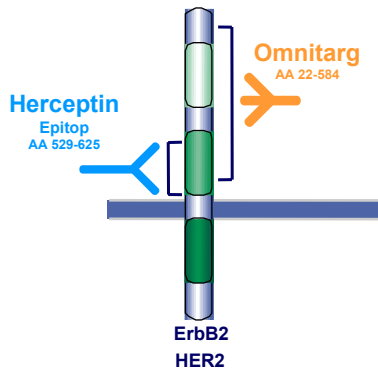
Early-stage oncology portfolio

Selected phase I/ II compounds

Conclusions

Omnitarg (Pertuzumab, R1273)

Prevents heterodimerization of HER2 receptor



Class

Recombinant humanized antibody against HER2 (erbB2) protooncogene

Mode of Action

Major effect on HER2 dimerization

Clinical Programs

Randomized Phase II ongoing

- Ovarian cancer combo cytotoxics
- mBC combo Herceptin

Phase IB ongoing

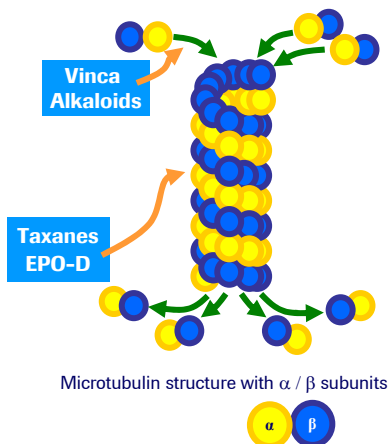
- NSCLC (combo Tarceva)

Go/ No go decision for Phase III: end 2006/ early 2007

Genentech⁷

Epothilone D (KOS-862/-1584, R1492/R1645)

Active against tumors that are insensitive to taxanes



Class

Natural macrolide

Mode of Action

Binds to microtubule causing tubulin stabilization and G2/M arrest

Clinical Programs

KOS-862

- Phase II mono completed
NSCLC and prostate Ca discontinued
- Phase II mono in mBC ongoing
- Phase IIB combo (Herceptin) in mBC ongoing

KOS-1584

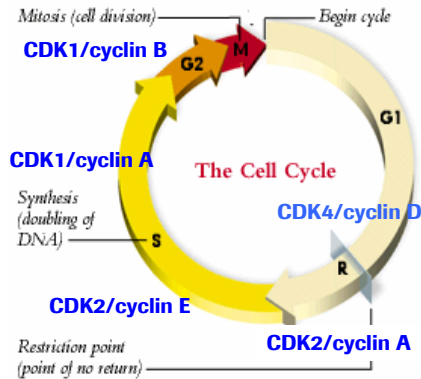
- Phase I ongoing in various tumor types

Go/ No go decision for Phase II and III: end 2006/ early 2007

KOSAN BIOSCIENCES⁸

Pan-CDK inhibitor (R547)

Inhibits proliferation at all stages of cell cycle



Class

Diaminopyrimidine

Mode of Action

Cell cycle inhibitor (CDK 1, 2, and 4)
Activity in multi-drug resistant tumors

Clinical programs

Phase I dose-escalation in various tumor types

Go/ No go decision for Phase II: late 2006/ early 2007

CDK: cyclin-dependent kinase

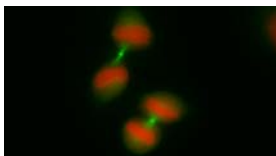
9

MAI (R1530)

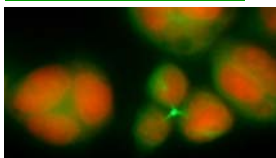
Broad spectrum of anti-tumor activity



Mitosis



Normal mitosis - Control



Mitotic arrest - MAI

Class

Pyrazolobenzodiazepine

Mode of Action

Inhibits proliferation

- induces apoptosis
- disrupts mitosis

Inhibits angiogenesis

Clinical programs

Phase I dose-escalation in various tumor types

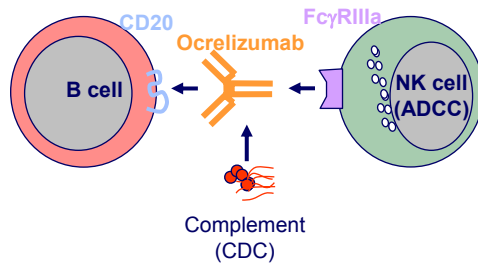
Go/ No go decision for Phase II: end 2006/ early 2007

MAI: Mitosis and Apoptosis Inhibitor

10

Ocrelizumab (R1594)

Aimed for better efficacy and safety profile



Class

Humanized antibody against CD20

Mode of Action

Superior binding of NK cells and increase in ADCC activity vs. MabThera

Decreased CDC activity vs. MabThera

Clinical programs

Phase I/ II dose escalation study in iNHL after progression with MabThera

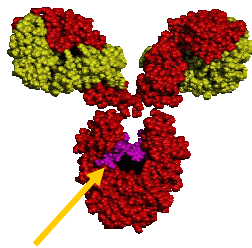
Go/ No go decision for next phase: end 2006/ early 2007

ADCC: antibody dependent cytotoxicity, CDC: complement dependent cytotoxicity

biogen idec Genentech 11

GlycoMAb technology (GlycArt)

Significant increase in effector function of antibody



New variants of the antibody, bearing special types of carbohydrates attached to the antibody constant region

Increased binding affinity to the FcγRIII-receptor of the immune effector cells

Expected impact of GlycoMAb

- Increased quality and quantity of response
- Reduction of drug dose
- Reduction of toxicity

Potentially best-in-class molecules

12



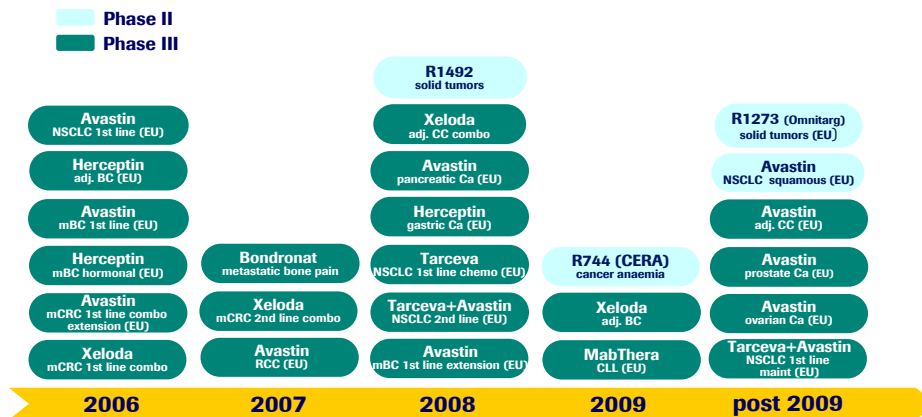
Early-stage oncology portfolio

Selected phase I/ II compounds

Conclusions



Major Roche managed projected submissions in Oncology over the next years



Status as of March 31, 2006
Unless stated otherwise, submissions will occur in US and EU