

Safety and health

Roche believes it is very important for employees to be able to work in as healthy and safe a working environment as possible. Safety and health committees have been introduced at virtually all Roche Group companies engaged in technical activities (production, laboratories, workshops).

Roche accident rate (RAR)

The RAR corresponds to the number of working days lost per employee each year at a Roche site. It is calculated as lost days x 1800/total hours worked (1800 representing the average working hours of a man-year).

Occupational accidents

Figures for occupational accidents in the Roche Group are generally at a low level. In the reporting year the RAR went up by 3.2% to 0.067. The number of accidents involving Roche employees decreased by 9.7% to 390, however, the number of total working days lost due to an occupational accident, reflecting the severity increased by 3.9%.

Over the long term the RAR trend reflects the continuous improvement in the accident situation within the Group.

Roche employs a considerable number of companies under contract, especially for construction and maintenance work. Accidents involving the employees of these companies are also recorded. Contractors working on our premises are obliged to follow the same safety rules as our own employees.

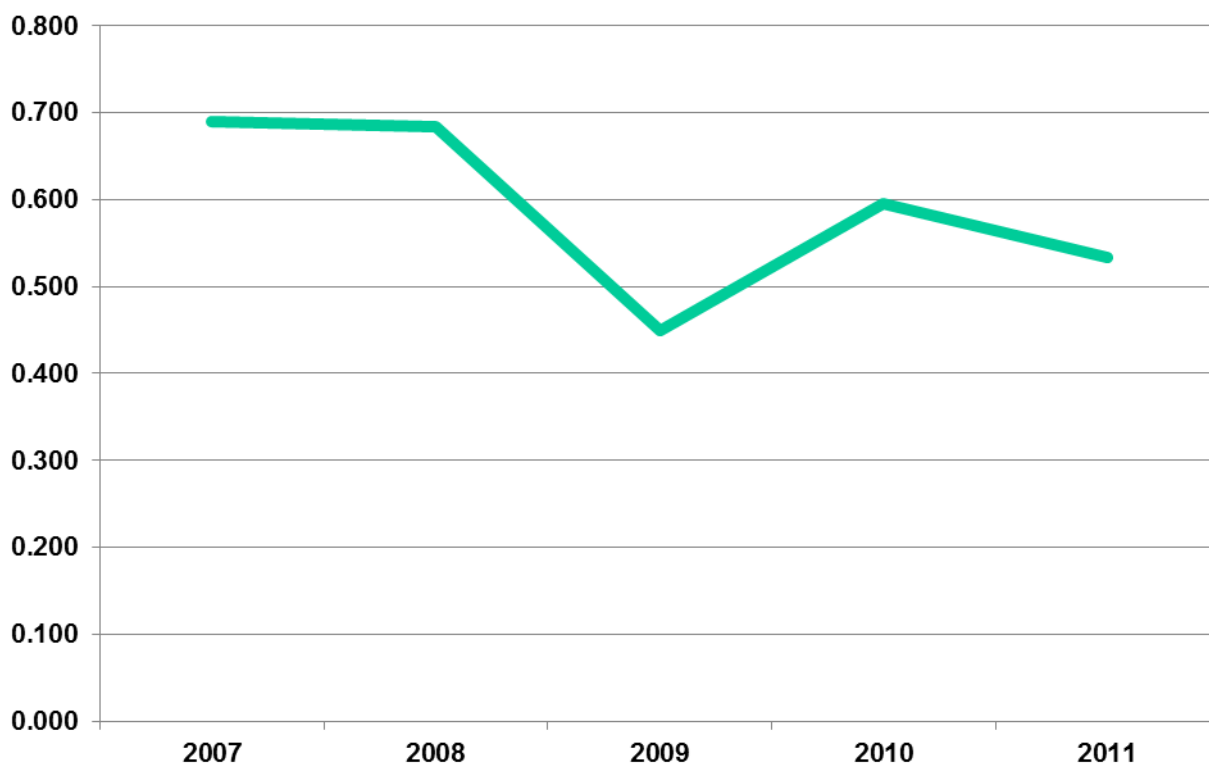
A total of 101 accidents involving personnel from contractors were reported in 2011, a decrease of 16.5% relative to the preceding year. At the same time the total hours worked by contractors went up by 12%. The contractor injury frequency (number of accidents per 100 000 contractor working hours) thus came down by 25.5%.

Occupational illnesses

Figures for cases of occupational illnesses in Roche operations are on very low levels with results of measurements scattering. The fluctuations between different reporting years thus cannot necessarily be considered as a trend.

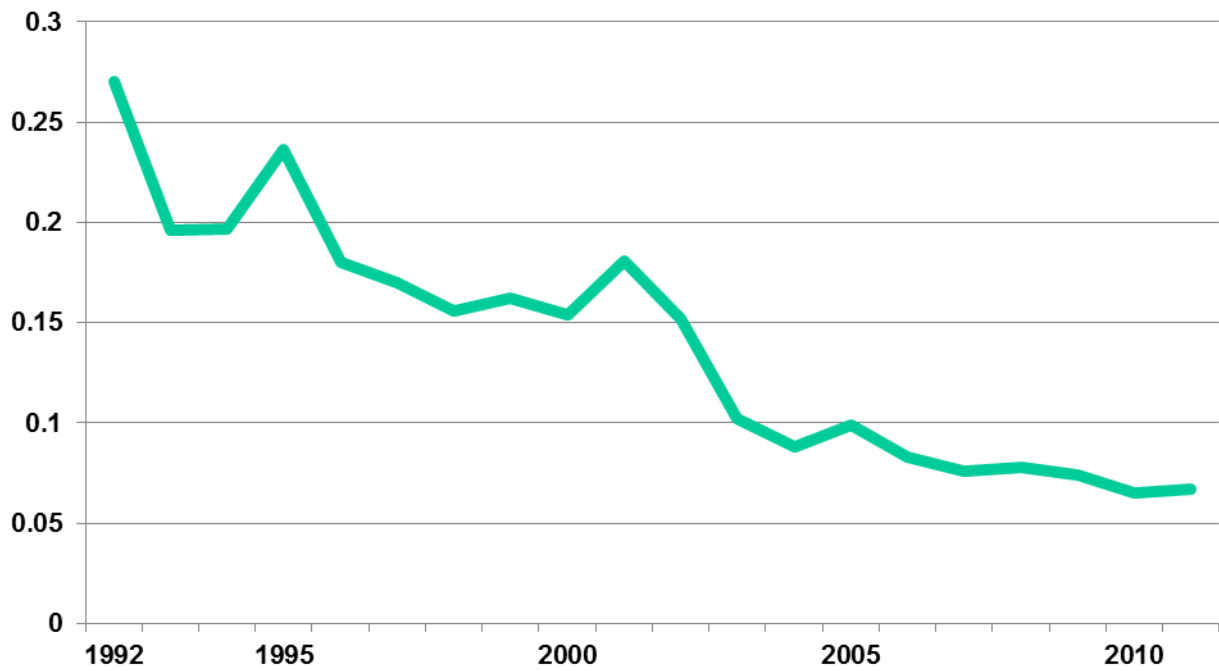
The total number of reported cases of occupational illnesses decreased by 23.4% to 141. Due to one single case causing an absence of almost one year the number of working days lost as a consequence went up by 75% to 2047. The types of illnesses reported have remained unchanged over recent years. Locomotor disorders continue to be the most common. Most of these are back problems and especially inflammation of the upper limbs caused by repetitive movements (e.g. using computer workstations). Illnesses attributable to the use of chemicals are limited to allergies and there were no reported cases of poisoning.

Accidents per 200 000 working hours



Year	2007	2008	2009	2010	2011
Accidents per 200 000 working hours	0.609	0.685	0.450	0.595	0.534

Roche Accident Rate (RAR)



Year	1992	1993	1994	1995	1996	1997	1998	1999	2000	2001	2002	2003	2004	2005
RAR	0.27	0.196	0.197	0.296	0.18	0.17	0.156	0.162	0.154	0.181	0.152	0.102	0.088	0.099
Year	2006	2007	2008	2009	2010	2011								
RAR	0.083	0.076	0.078	0.074	0.065	0.067								