

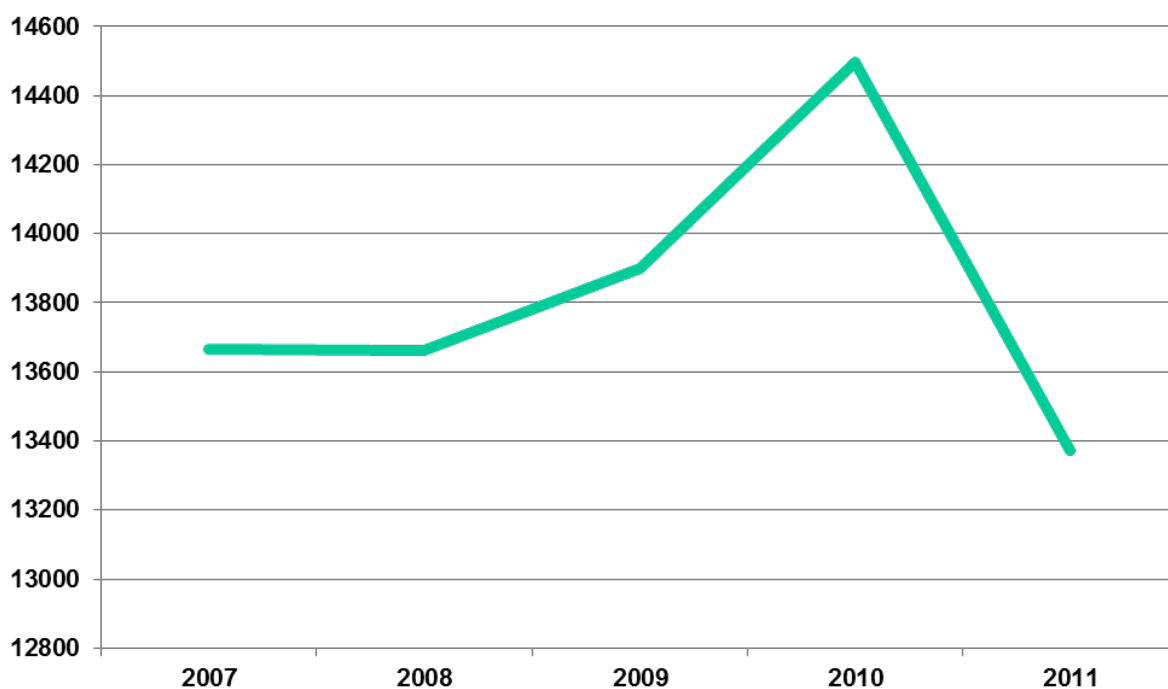
## Energy consumption

Responsible use of resources is a key factor in sustainable development. Reflecting its commitment to sustainability, Roche is continuously endeavouring to cut Group energy consumption. The success of these efforts is clear from the achievements in this respect over recent years. Despite the change in the scope of reporting as of 2004 to include fuel consumption for business travel and for the operation of Roche's car fleet, it has been possible to achieve a 51.2% reduction in energy consumption in relation to sales since 1992. This development is obviously demonstrating a decoupling of energy use from corporate growth.

In 2011, overall energy consumption went down by 1123 terajoules in absolute terms, totalling 13 372 terajoules. This 7.7% decrease could be achieved in all areas stationary equipment, carfleet as well as business travelling. The implementation of projects from energy action plans contributed to this pleasing result of reaching our Group goal to improve energy efficiency

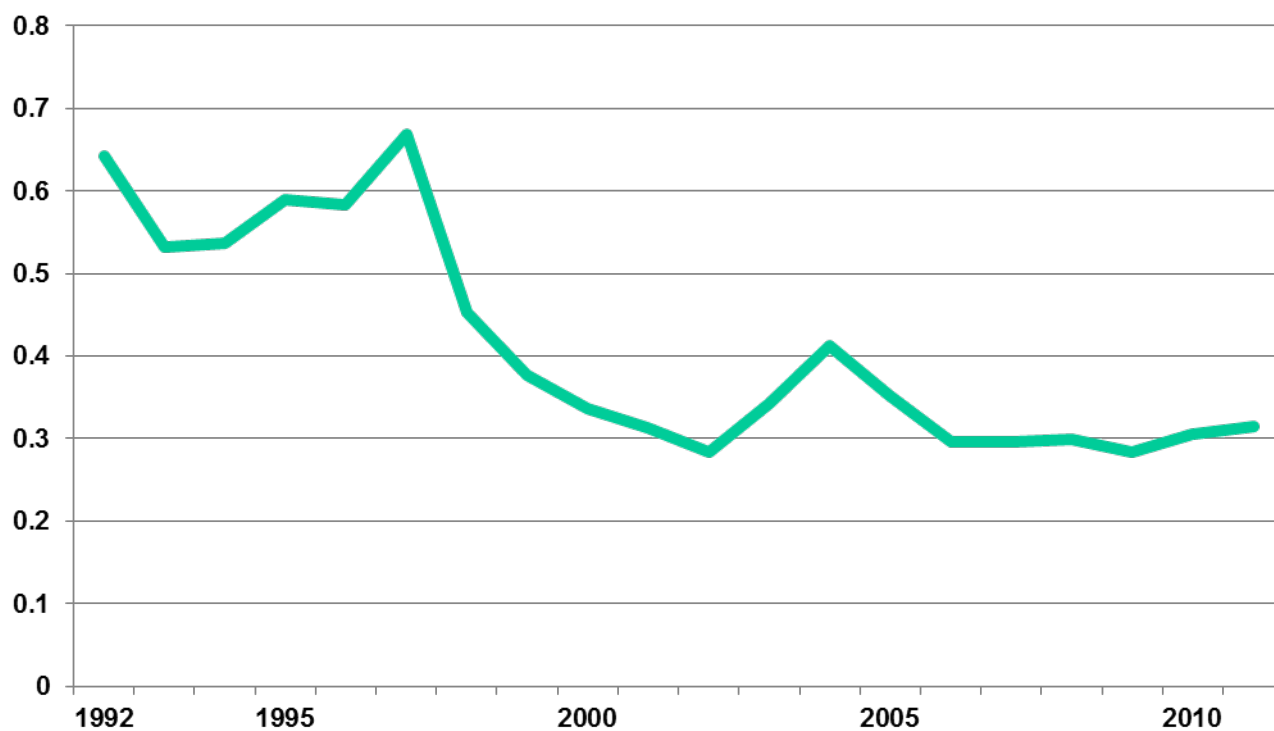
9.2% of total energies consumed originated from sustainable sources. Energy sources were thoroughly investigated and reported accordingly. Thus the share of sustainable energies could be calculated more accurately.

### Energy consumption (TJ)



Year	2007	2008	2009	2010	2011
TJ energy	13 664	13 662	13 898	14 495	13 372

## Energy consumption (TJ) per mio CHF sales



Year	1992	1993	1994	1995	1996	1997	1998	1999	2000	2001	2002	2003	2004
TJ / mio CHF	0.643	0.532	0.537	0.589	0.583	0.668	0.453	0.376	0.337	0.314	0.284	0.343	0.413
Year	2005	2006	2007	2008	2009	2010	2011						
TJ / mio CHF	0.352	0.297	0.296	0.299	0.283	0.305	0.314						

The trend since 2003 is a reflection of the changes in the system boundaries for collecting key figures. The contributions made by our affiliates Genentech and Chugai have been included since 2004. Energy consumption and greenhouse gas emissions take account of the corporate vehicle fleet and business travel.